

The State of the Department of Public Health

FY2001-02



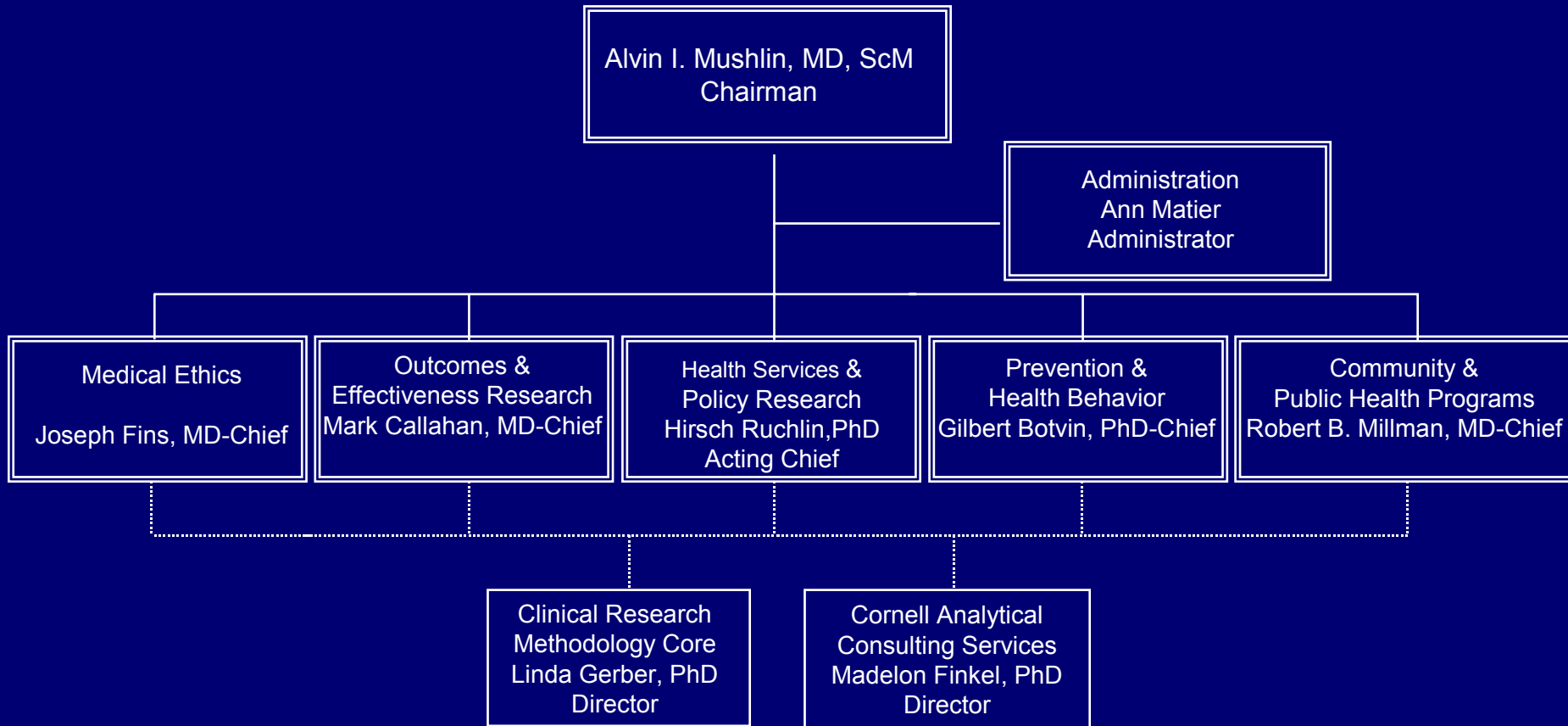
September 3, 2002

Topics

- Department Organization
- Faculty/Staff
- Academic Activities
- Research
- Consulting Services
- Clinical Services
- Finances
- Public Relations and Development
- Conclusions
- Future Directions

Department Organization

- Dean's approval of Divisions and Chiefs – July 2001
- Organizational Structure



Faculty/Staff

Recruitment

■ Full-time / Part-time Faculty

- Cathleen Acres, RN, MA – Lecturer
- Pamela Buchbinder, MD – Clinical Assistant Professor 7/1/02
- Heather Gold, PhD – Instructor 7/1/02
- Lisa Korn, MD, MPH – Assistant Professor 7/1/02
- Barbara Maltby, MA – Lecturer
- Tracy Nichols, PhD – Assistant Professor 8/1/02
- Bruce Schackman, PhD – Assistant Professor
- Leon Scrimmager, MD – Clinical Assistant Professor

Faculty/Staff

■ Secondary Appointments/Voluntary Faculty

- Kristine Alpi, MA – Lecturer
- Peter Bach, MD, MAPP – Assistant Professor *
- Howard Berliner, ScD – Adjunct Professor *
- Van Dunn, MD – Clinical Assistant Professor *
- Mathea Falco, JD – Clinical Associate Professor *
- Marshall Glesby, MD, PhD – Assistant Professor*
- Curtis Hart, MDiv - Lecturer
- Lisa Honkanon, MD – Instructor *
- Michael Kattan, PhD – Associate Professor *
- Jorge Kizer, MD - Assistant Professor
- Nina Kohn, MA – Assistant Biostatistician

* in progress

Faculty/Staff

■ Secondary Appointments/Voluntary Faculty: continued

- Stephen Lyman, PhD, MSPH – Assistant Professor
- Nandita Mitra, PhD – Instructor *
- Franklin Miller, PhD – Associate Professor *
- Saied Mirafzali, MD, MPH – Assistant Professor *
- Walid Michelen, MD – Assistant Professor *
- Marcus Reidenberg, MD, - Professor *
- Keith Roach, MD – Associate Professor
- Aron Ron, MD, MBA, MPH – Assistant Professor *
- Deborah Schrag, MD, MPH – Assistant Professor *
- Lisa Staiano-Coico. PhD – Professor
- Julie Tai, MA – Assistant Biostatistician

* in progress

Faculty/Staff

■ Promotions

- Sonia Austrian, DSW – Associate Professor of Clinical Public Health
- Marianne Berwick, PhD – Associate Professor of Epidemiology
- Mark Callahan, MD – Associate Professor
- Bruce Phariss, MD, Clinical Assistant Professor

■ Staff

- 30 new staff members joined the department
 - New = 20
 - Replacement = 10

Faculty/Staff

Searches in Progress

- Health Services and Policy Research: Division Chief
- Prevention and Health Behavior: 2 Faculty
- Medical Ethics: 1 Faculty

Future/Planned

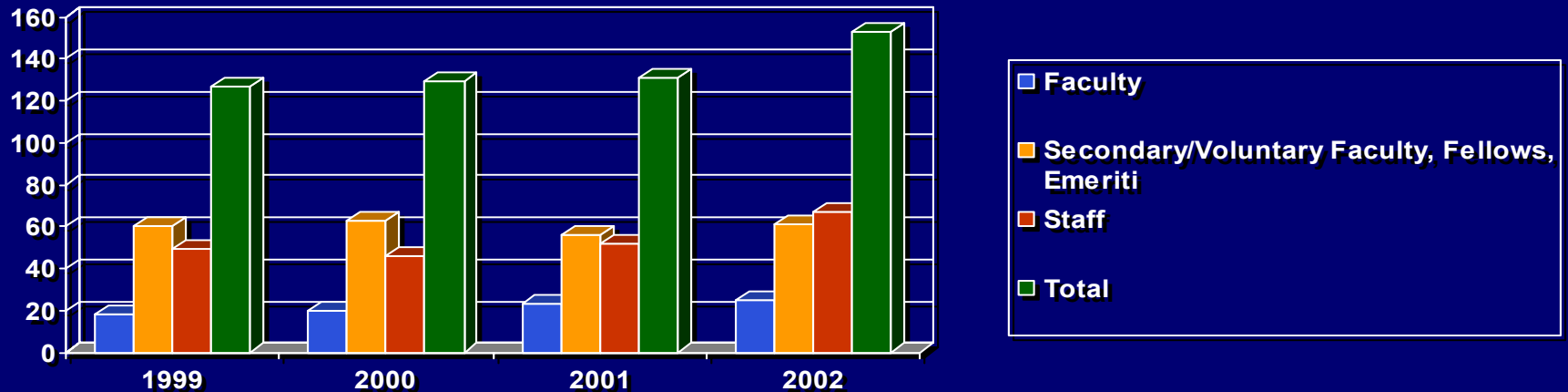
- Strategic Plan Clinical Scholars
 - Medical Ethics: 2 Faculty
 - Outcomes & Effectiveness Research: 2 Faculty
 - Health Services and Policy Research

Faculty/Staff

17%
growth

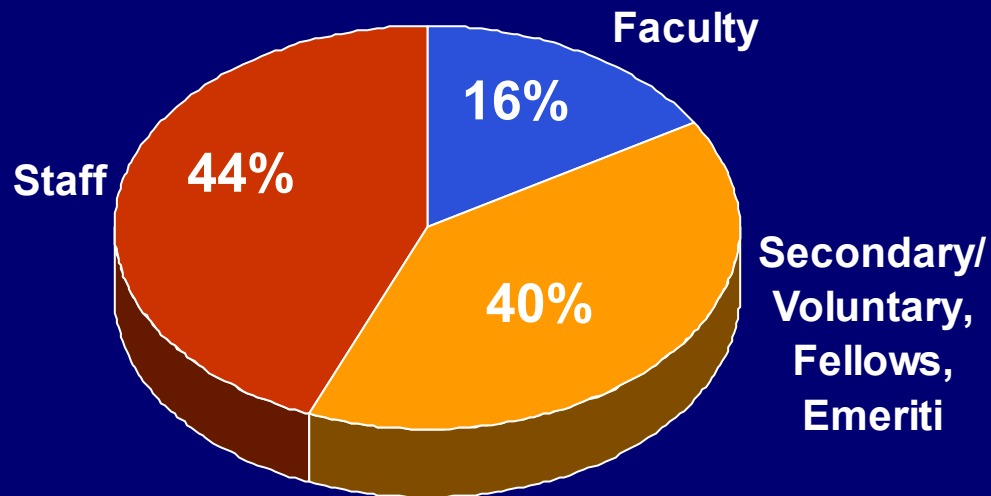


	1999	2000	2001	2002
Faculty	18	20	23	25
Secondary/Voluntary Faculty, Fellows, Emeriti	60	63	56	61
Staff	49	46	52	67
Total	127	129	131	153



Faculty/Staff

Department Profile (snapshot as of June 30, 2002)



T=153

Meetings and Seminars

	2000-01	2001-02	Change	
Business Meetings				
Faculty Council	8	9	1	13%
General Faculty	4	4	0	0%
Administration	1	3	2	200%
	<u>13</u>	<u>16</u>	<u>3</u>	
Seminars				
Academic/Research Conference	9	9	0	0%
Journal club	10	10	0	0%
Guest Speakers (Recruitment candidates, colleagues)	12	14	2	17%
Research in Progress	2	19	17	850%
	<u>33</u>	<u>52</u>	<u>19</u>	
Special Events				
Lorraine and Ralph Lubin Visiting Professorship	1	1	0	0%
Grand Total	<u>47</u>	<u>69</u>	<u>22</u>	47%

Other Department sponsored activities: David Roger's Health Policy Colloquium
& the Student Health Policy Seminar

Educational Activities

Medical College Courses

- Epidemiology and Biostatistics
- Public Health and Community Medicine
- Evidence-Based Medicine
- US Healthcare Systems
- Medical Ethics
- Health Systems Rotation
- Electives

Funding

Institutional support \$ 80,464

Total faculty instruction hours 2300

Average cost per faculty hour \$ 92

Cost \$211,600

Deficit < \$131,136 >

Other Educational Activities

	<u>Funding</u>
■ IRB Training	None
■ Managed Care And Health Systems Rotation	Full
■ Ethics Faculty Associates Program	Full
■ Epi/Biostat course for Network institutions	Full
■ Introductory Statistics for Cornell Physician Assistant Program	Partial
■ Bioterrorism (Grand Rounds, Residents, NYPD, etc)	None
■ Addiction Psychiatry Residency	Partial
■ Preventive Medicine Residency	Partial

Educational Activities

Future endeavors

- MPH/Certificate in Outcomes Research
 - Partnership with Columbia & Memorial
 - T-32 application to AHRQ
- CIMA resident-faculty research training
- Clinical Research Training

Research

Grants	1999-2000	2000-01	2001-02
Total Proposal Submitted	17	25	27
Total Proposal Dollars	10,192,703	9,284,066	28,354,219
Total New Awards Granted	10	11	11
Total New Awards Dollars	6,956,765	3,401,156	2,795,769
Other Research Support	1999-2000	2000-01	2001-02
Network: (Outcomes, Ethics, Community)		371,000	416,500
Geriatrics			19,250
WMC/Qatar			26,600
<hr/>			
Totals	-	371,000	462,350
<hr/>			
Grand Total New Commitments	6,956,765	3,772,156	3,258,119

Consulting Services

Cornell Analytics/Consulting Services

Servicing healthcare organizations outside of the Weill Cornell campus

	FY2001	FY2002	Change	
Total New Contract value	\$160,924	\$209,934	\$49,010	23%

Current Client list:

Rogasin	Merck
Brooklyn Hospital -Family Medicine	The National Jewish Center for Learning & Leadership
Brooklyn Hospital -Pediatrics	Episcopal Diocesan
Lincoln Hospital	New York Academy of Medicine
WMC - Physician Organization	Strategic Marketing Technologies, Inc.

Consulting Services

Clinical Research Methodology Core

Servicing investigators of Weill Cornell campus

	2000-01	2001-02	Change
Total number of projects	54	64	7 13%
Type of Service			
Biostatistical	49 91%	56 88%	
Methodological	5 9%	2 3%	
Deliverable		6 9%	
% cost recovery	4%	14%	
Utilization by Divisions/Offices	21	19	-2

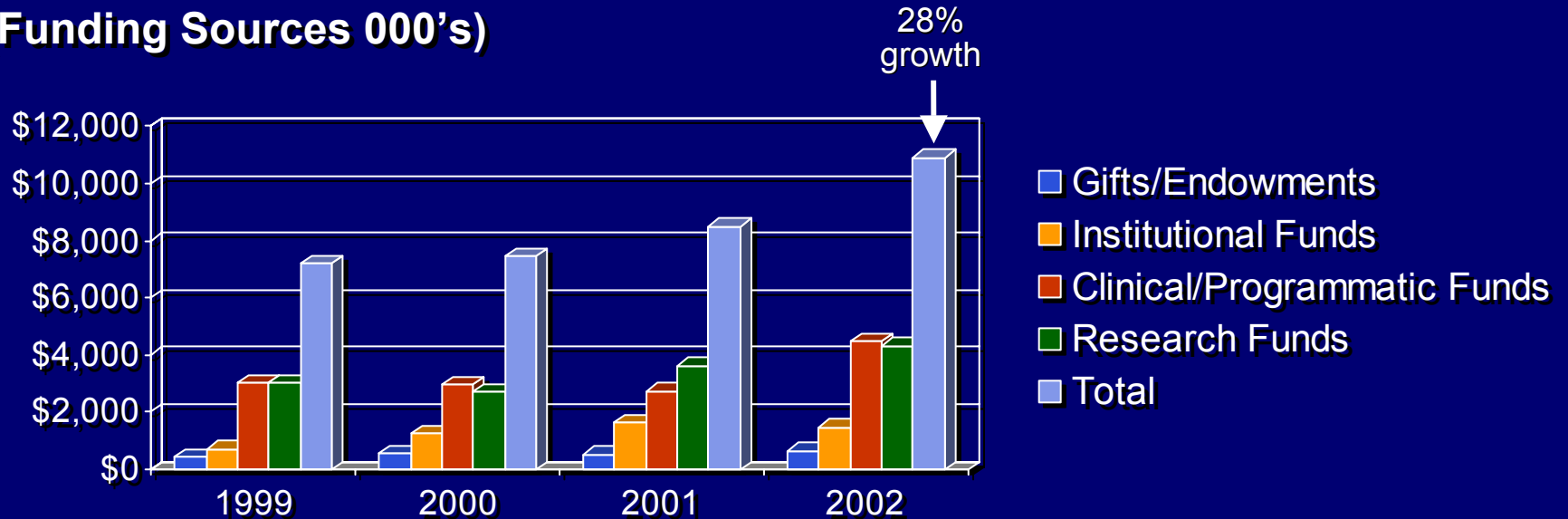
Top users: Pediatrics Medicine
 Cardiothoracic Surgery Radiology
 Neurology OBGyn
 Surgery

Clinical Services

- CIMA
- Methadone
 - Adult Methadone clinic – personnel transfer 9/01
 - Medical Maintenance program launched
 - ADP – administrative enhancements
- Midtown Center launches Executive Track
- Employee Development Center – 18% growth
- 9/11 Response
 - EAPC & EDC
 - Bioterrorism

Finances: 4 Year Trend

(Funding Sources 000's)



Source	1999	2000	2001	2002	change "01 to 02"	change "99 to 02"
Gifts/Endowments	427	553	531	662	25%	55%
Institutional Funds	726	1,236	1,622	1,464	-10%	102%
Clinical/Programmatic Funds	3,022	2,955	2,747	4,474	63%	48%
Research Funds	3,040	2,708	3,613	4,316	19%	42%
Total	7,215	7,452	8,513	10,916	28%	51%

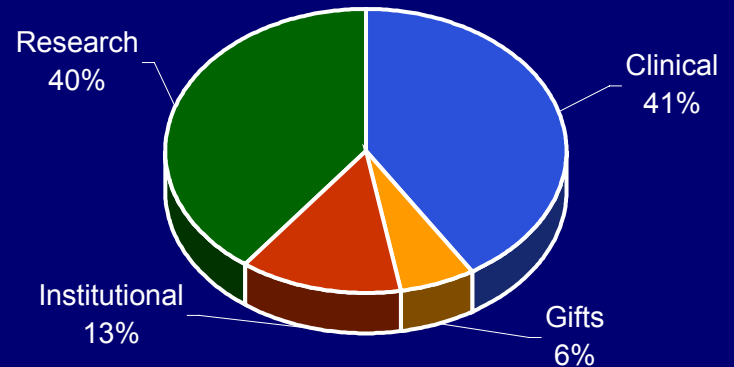
Finances

July 1, 2001 to June 30, 2002

Funding Source

Clinical/Programmatic	4,474,480
Gifts/Endowments	662,441
Institutional Funds	1,463,553
Research Grants/Contracts	4,315,908

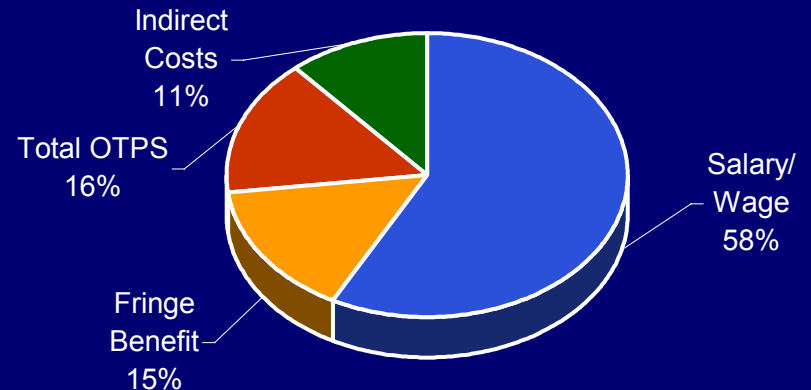
Total Department Funding 10,916,382



Expense

Salary/ Wage	6,313,980
Fringe Benefit	1,652,627
Total OTPS	1,709,334
Indirect Costs	1,240,442

Total Expenses 10,916,382

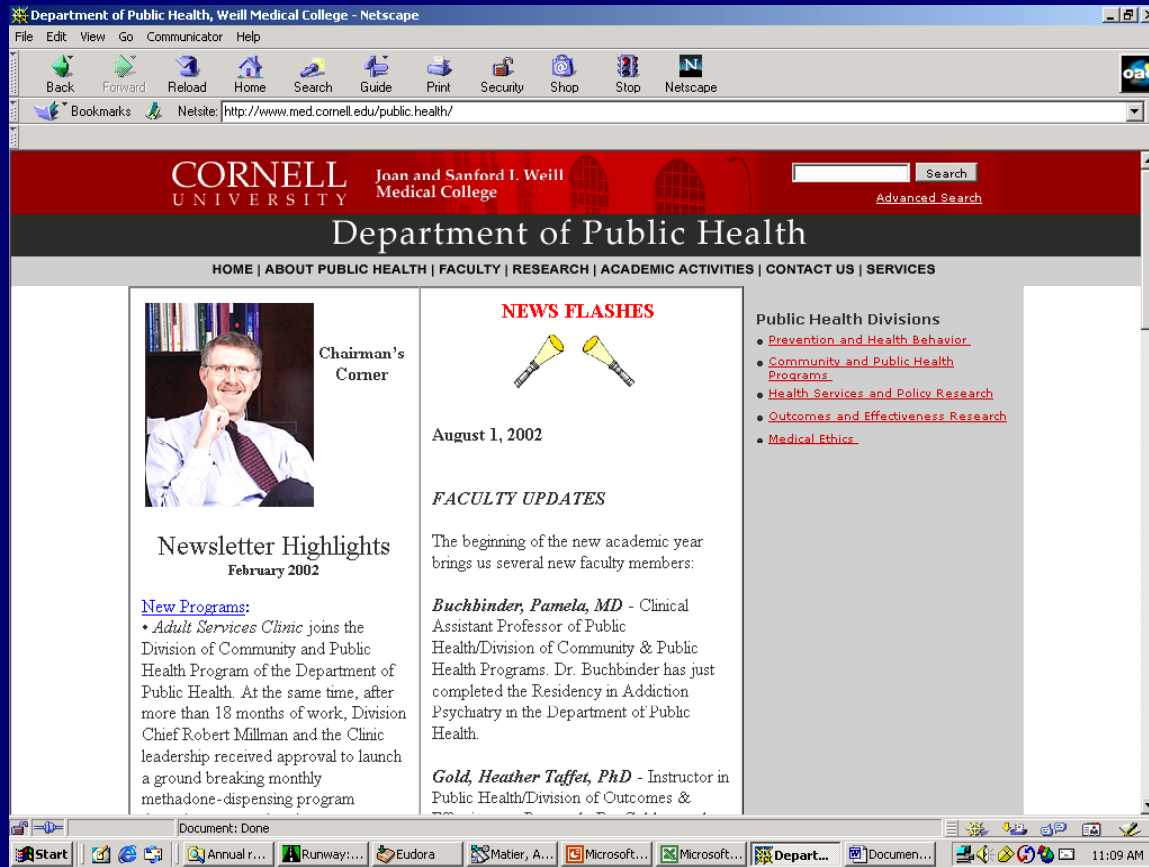


Public Relations and Development

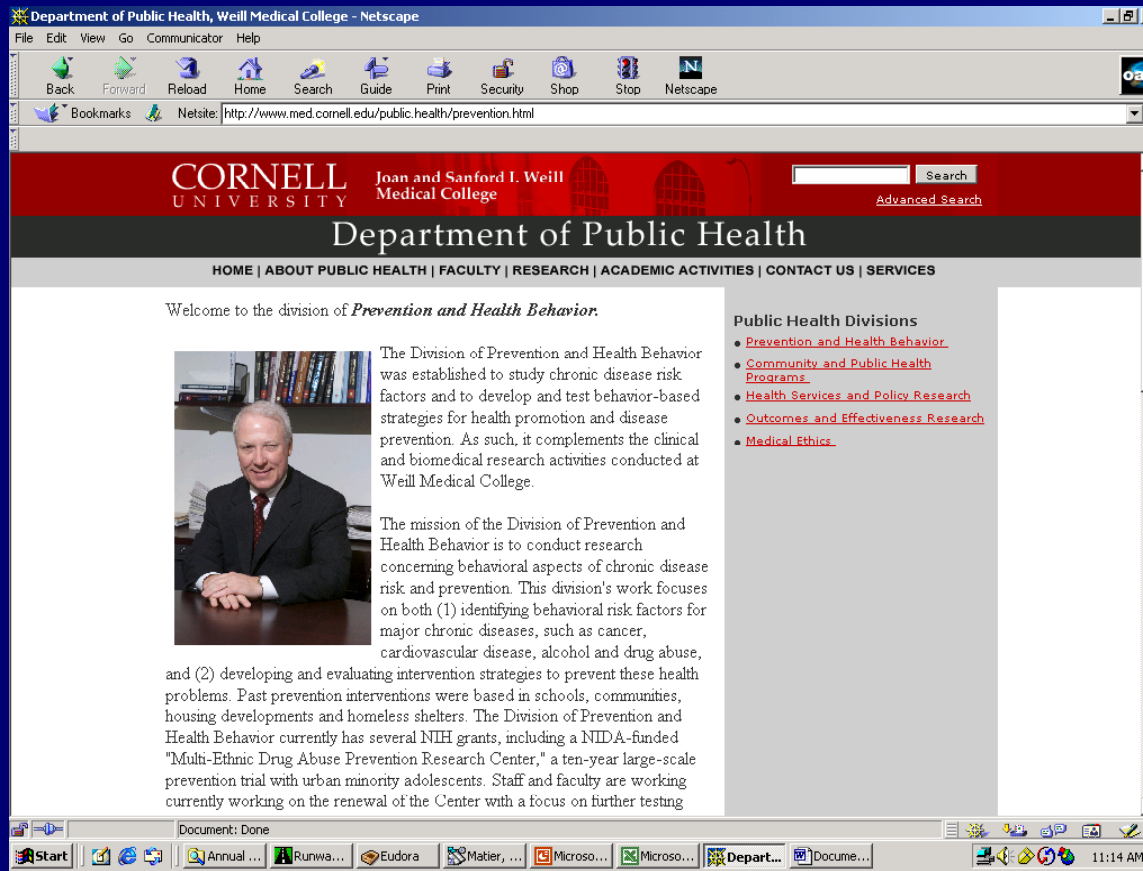
Public Relations

- Annual report 2000-01 – published 2/02
- Enhanced Web-site: focus for 2003
 - Faculty profiles
 - Bi-weekly and monthly “news flashes”
 - Newsletters
 - Current research with abstracts
 - Calendar of events
 - Contact information

Home Page



Divisional Page



Faculty Page

Department of Public Health, Weill Medical College - Netscape

File Edit View Go Communicator Help

Back Forward Reload Home Search Guide Print Security Shop Stop Netscape

Bookmarks Netsite: <http://www.med.cornell.edu/public.health/faculty.html>

CORNELL UNIVERSITY Joan and Sanford I. Weill Medical College

Department of Public Health

HOME | ABOUT PUBLIC HEALTH | FACULTY | RESEARCH | ACADEMIC ACTIVITIES | CONTACT US | SERVICES

Chairman
Alvin I. Mushlin

Health Services and Policy Research
Hirsch S. Ruchlin
Oliver T. Fein
Madelon L. Finkel
Mary E. Goss
George G. Reader
Roster*

Outcomes and Effectiveness Research
Mark A. Callahan
David S. Battleman
Paul J. Christos
Linda M. Gerber
Heather T. Gold
Nathaniel Hupert
Edward C. Jones
Robert G. Marx
Valerie Mike
Bruce R. Schackman

Community and Public Health Programs
Robert B. Millman
Sonia Austrian

Public Health Divisions

- [Prevention and Health Behavior](#)
- [Community and Public Health Programs](#)
- [Health Services and Policy Research](#)
- [Outcomes and Effectiveness Research](#)
- [Medical Ethics](#)

Document: Done

Start Annual ... Runwa... Eudora Matier, ... Microso... Microso... Depart... Docume... 11:15 AM

Development

- Philanthropic funds currently support 6% of department operation
- Target is 20%
- Our donors:
 - Fritz & Adelaide Kauffmann Foundation
 - Nanette Laitman
 - The Lasdon Family
 - Elise Strang L'Esperance
 - The Lubin Family
 - The Charles A. Mastrondardi Foundation
 - Henri R. Nasser
 - Rosenkranz Foundation
 - Saul P. Steinberg
 - Anonymous Donor

Conclusions – SWOT analysis

Strengths

- Growing faculty and research capability
- Funding diversity/opportunity
 - Extramural grants
 - Linkage to Hospital and Network
 - Increasing recognition of value of our expertise and work
- Strong presence in Medical College curriculum
- Expanding clinical programs
- Departmental facilities/space

Conclusions – SWOT analysis

Weaknesses

- Needed faculty recruitments
- Limited “venture” funding
- Low gifts and endowments
- Underdeveloped data systems
 - Our healthcare system
 - National databases
 - Computer/analytic capability
- Underdeveloped graduate student/fellowship programs
- Deficient financing of teaching programs and primary care clinical activities
- Lack of strategy and opportunities for community/public health programs
- Limited space for growth

Conclusions – SWOT analysis

Opportunities

- Link to expanding emphasis and funding for quality of care/outcomes/prevention/ethics research in the Hospital and Network
- Role in new institutional clinical research/trials infrastructure
- Development of certificate/MPH (future PhD) with MSKCC and Columbia
- New efforts: Medical informatics, Qatar
- Strategic plan funding

Threats

- Volatility of funding environment
- Gaps in medical care reimbursement
- Competition for funding: unlevel “playing field”
- Overwork/morale

Future Directions

Next Steps

- Recruitments
- Development of graduate courses
- Work-out incremental funding strategy with NYPHS re faculty and grants
- Participate in WMC clinical research task force
- Explore medical informatics and Qatar research programs
- Expand PR & development efforts
- Plan a departmental retreat for Fall 2003

